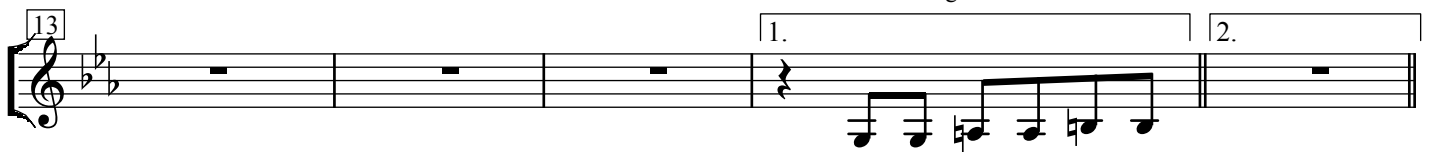
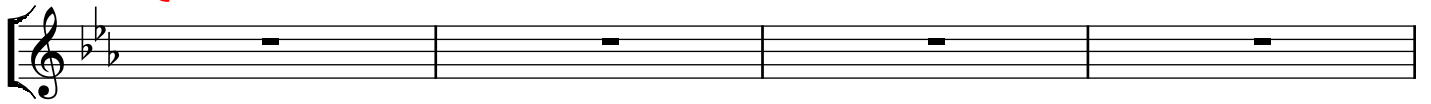


MILLERMOALER TANGO

comp: Reiner Oberbeck

AKK

A1



go to bar 18

go to bar 50



A2



B





C

50

54

58

62

A3

66

70

74

78

Coda

81

85

89

Besetzung:	1.St	2.St.	3.St.	4+5 Stimme
a)	V11	V12	Akk.	Piano+Cello/Bass
b)	V11	V12	Vcl	Piano+Bass
c)	V1	Clar.	(Vcl)	Piano

Ablauf: A1 - A2 - B - A1 - C - A3 - Coda